

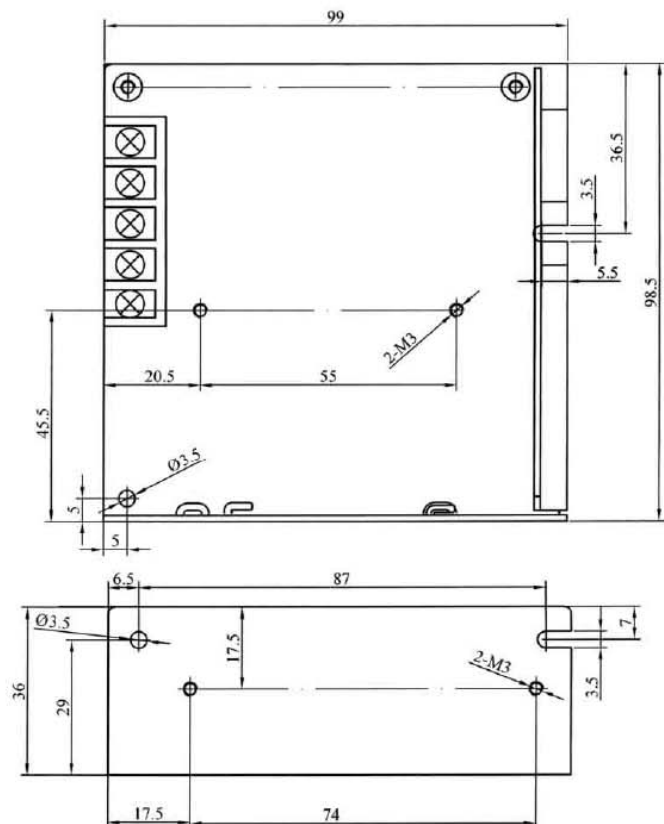
## 25W Single Output Certified Power Supply

- Universal Input 85 to 264 VAC
- EMI Meets EN55022(CISPR22) Class B
- Low Power Consumption
- Approvals: UL / CUL / TUV / CB / CE
- Protections: Over Load / Over Voltage/ Short Circuit
- 100% Full Load High Temperature Burn-in Test
- 2 Years Warranty



Input Voltage Range	85~264VAC; 120~370VDC
Input Frequency	47-63Hz
Inrush Current	Cold Start, 15A/ 115VAC, 25A/ 230VAC
Output Adjustment Range	±10% Rated Output Voltage
Line Regulation	≤0.5%
Output Over Load Protection	110%~150% Hiccup Mode, Auto-recovery
Output Over Voltage Protection	115%~135% Rated Output Voltage
Output Short Circuit Protection	Hiccup Mode, Auto-recovery
Rise, Hold Up Time	50mS, 20mS at Full Load (Typical)
Hi-pot Isolation	I/P-O/P: 3KVAC, I/P-FG: 1.5KVAC, O/P-FG: 0.5KVAC
Operating Temperature Range	0°C to +50°C@100%, -10°C@80%, +60°C@60% Load
Storage Temperature Range	-40°C to +85°C, 0 to 95%RH (Non-Condensing)
Safety Standards	UL60950-1, TUV EN60950-1
EMC standards	EN55022 class B, EN61000-3-2,3 EN61000-4-2,3,4,5,6,8,11,ENV50204
Cooling Method	Free Air Cooling Convection
Weight	0.39Kgs/pcs

Product model	DC output	Load regul.	R&N	Efficiency
HTS-25F-5	5V, 0~5A	1%	50mV	73%
HTS-25F-12	12V, 0~2.1A	0.5%	100mV	77%
HTS-25F-15	15V, 0~1.7A	0.5%	100mV	78%
HTS-25F-24	24V, 0~1.1A	0.5%	100mV	81%



**notes:**

1. All dimensions in mm.
2. Tolerance (except cable length): xx = ±0.04  
xxx = ±0.010